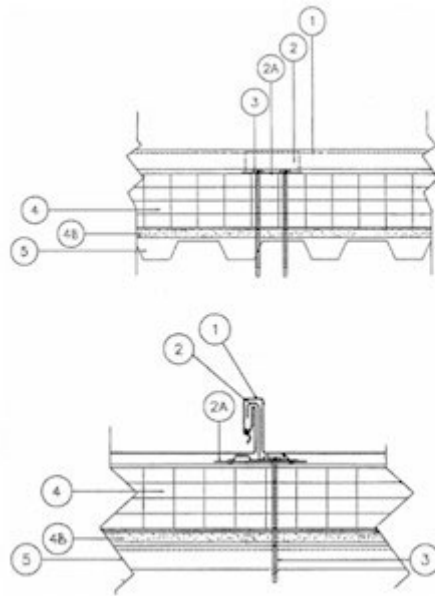


Construction No. 544

Uplift - Class 90

Fire Not Investigated



1. Metal Roof Deck Panels* - No. 24 MSG min. Coated steel. Max. panel width 18 inches and rib height 1 3/4 inches. Panels continuous over two or more spans. Endlap for panels to be overlapped 6 in. A bead of sealant may be used at panel ends and side joints.

- A&S BUILDING SYSTEMS, INC.-"LokSeam"
- MBCI-"LokSeam"
- MESCO METAL BUILDINGS-"LokSeam"
- NCI BUILDING SYSTEMS LP-"LokSeam"

2. Roof Deck Fasteners* - (Panel Clips) - One piece assembly, 3 1/2 inches wide, 1 7/8 inches high. Minimum thickness No. 18 MSG. One clip to be used at each purlin. Maximum clip spacing to be 48 inches O.C. Clips to interface with bearing plates (Item No. 2A).

- NCI BUILDING SYSTEMS LP - "LokSeam UL 90 Clip"

2A. Bearing Plate - No. 24 MSG minimum gauge coated steel, 5 inches wide by 3 7/8 inches long (50,000 psi minimum yield strength).

3. Panel Fasteners (screws) - Fasteners used to attach panel clips (Item No. 2) and bearing plates (Item No. 2A) through rigid board insulation (Item No. 4), light gauge steel deck (Item No. 5) and into purlins (Item No. 7) to be No. 14 self-tapper. Two screws per clip to be used. Length to be a minimum of 1/2 inch longer than the combined thickness of the liner panel (Item No. 5), rigid insulation (Item No. 4), gypsum wall board (Item No. 4B) and plywood or oriented strand board (Item No. 4A).

4. Foamed Plastic - (Rigid insulation) -Minimum thickness 1 inch, maximum thickness 6 inches. Density to be a minimum of 2 pcf.

4A. Plywood or OSB - (optional) - (not shown) - Minimum APA rated plywood or Oriented Strand Board (OSB), nominal thickness 1/2 inch. To be installed over Rigid Board (Item No. 4) in lieu of bearing plates (Item No. 2A).

4B. Gypsum Wallboard - (optional) - Any 5/8 inch thick gypsum wallboard supplied in sheets 2 x 4 to 4 x 12 foot. Applied with adhesive perpendicular to steel liner panel (Item No. 5). End joints to occur over crests of steel liner panel (Item No. 5) and be staggered 2 foot in adjacent rows. The total cumulative thickness of the rigid board (Item No. 4), plywood/OSB (Item No. 4A) and gypsum board (Item No. 4B) may not exceed 6 inches.

5. Liner Panel - (optional) - No. 29 MSG minimum steel. Minimum yield strength 80,000 psi, minimum depth 9/16 inches, maximum pitch 2.6667 inches O.C.

6. Underlayment - (optional) (not shown) - Any suitable membrane to protect substructure (Item 4A).

7. Supports (Purlins) - (not shown) - No. 16 MSG minimum thickness coated steel with a minimum yield strength of 50,000 psi. Or minimum "H" series open-web joists. Maximum spacing 48" O.C.

*Bearing the UL Classification Marking.