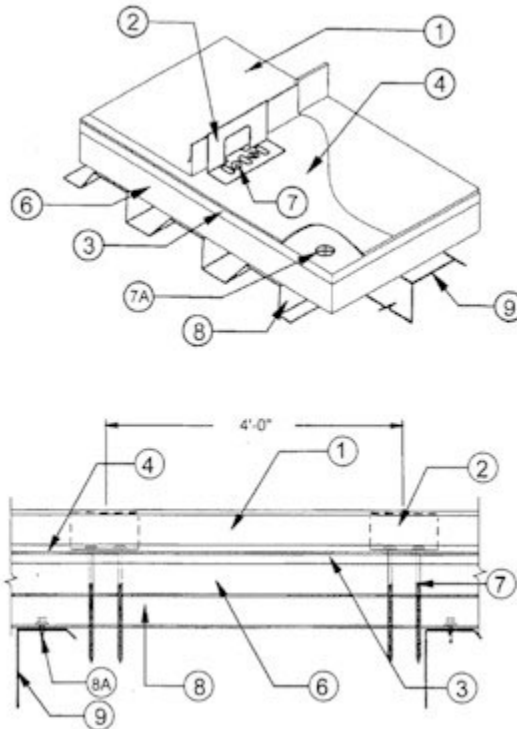


**Construction No. 486**

**Uplift - Class 90**

**Fire Not Investigated**



**1. Metal Roof Deck Panels\*** No. 24 MSG min coated steel, 18 in. max width, 1-3/4 in. high at the ribs. Panels continuous over three or more spans. Endlaps for panel to be overlapped 6 in. and to include back-up plate (Item 2A). A bead of sealant may be used at panel end joints.

- A&S BUILDING SYSTEMS, INC.-"LokSeam"
- MBCI-"LokSeam"
- MESCO METAL BUILDINGS-"LokSeam"
- NCI BUILDING SYSTEMS LP-"LokSeam"

**2. Roof Deck Fasteners\*** One piece assembly, 3-1/2 in. wide, 1-7/8 in. high, thickness 0.048 in. Clip spacing to be 48 in. OC.

- NCI BUILDING SYSTEMS LP-"LokSeam UL 90 Clip"

**2A. Endlap Back-Up Plate** (Not Shown) - No. 16 MSG min coated steel, width of back-up plate to correspond to width of panel. Two 1 in. wide by 3/4 in. long tabs are used for sliding over end of panels.

**3. Wallboard Gypsum\* (Mineral Board)** Min thickness 1/2 in. Opposite side edges have a tongue and groove configuration. Butt (end) joints to be staggered and occur over steel deck crests. Wallboard installed perpendicular to steel deck corrugations.

- LOADMASTER SYSTEMS INC--"Duraflex Mineral Board"

**4. Vapor Barrier** Single ply used between the wallboard (Item 3) and the metal roof deck panels (Item 1).

**5. Joint Tape** (Not Shown) - 2-1/2 in. wide tape supplied by manufacturer to be used at all wallboard joints.

**6. Foamed Plastic (Rigid Insulation)** (Optional) - Expanded polystyrene or polyisocyanurate supplied in 4 by 8 ft sheets, min thickness 13/16 in. min density 1.0 pcf. All end joints to be staggered with respect to adjacent rows. All joints to be offset from joints in mineral board (Item 3).

**7. Fasteners** Screws used to fasten panel clips (Item 2) to steel deck (Item 8) to be No. 14 Truss head with No. 3 Phillips drive. Length to be min 1/2 in. longer than thickness of wallboard, rigid insulation and metal deck. Two screws per clip. Fasteners used at endlaps to be one of the following: 14x1 in. Type AB self-tapper; 14x1-1/4 in. Hex washer head self-driller; 14x1 Type AB Phillips stainless steel self-tapper.

**7A. Fasteners** For attaching in wallboard to steel deck to be min 0.140 in diam threaded shank Phillips, bugle or trumpet head, self-drilling, self-tapping, corrosion resistance coated steel screws supplied by manufacturer. Screws are installed into top corrugations of steel roof deck through nom 3 by 3 in. corrosion resistant steel roof deck plates, spaced in a pattern as determined by the pitch of the steel deck with a min of 21 fasteners per 4 by 8 ft sheet (Item 3).

**8. Steel Deck** Fabricated to various profiles, min yield strength 33,000 psi. Steel deck profile, thickness, support spacing and method of positioning (end and side laps) and fastening deck to supports to be per deck manufacturers requirements for uplift loading.

**8A. Deck Fasteners** Steel deck panels to be fastened to structural supports and at laps using puddle welds with weld washers or screw fasteners per deck manufactures requirements for uplift loading.

**9. Purlins** 16 MSG min coated steel, min yield strength 50,000 psi or Type H open web joists.

Refer to General Information, Roof Deck Construction (Roofing Materials and Systems Directory) for Items Not Evaluated.

\*Bearing the UL Classification Marking