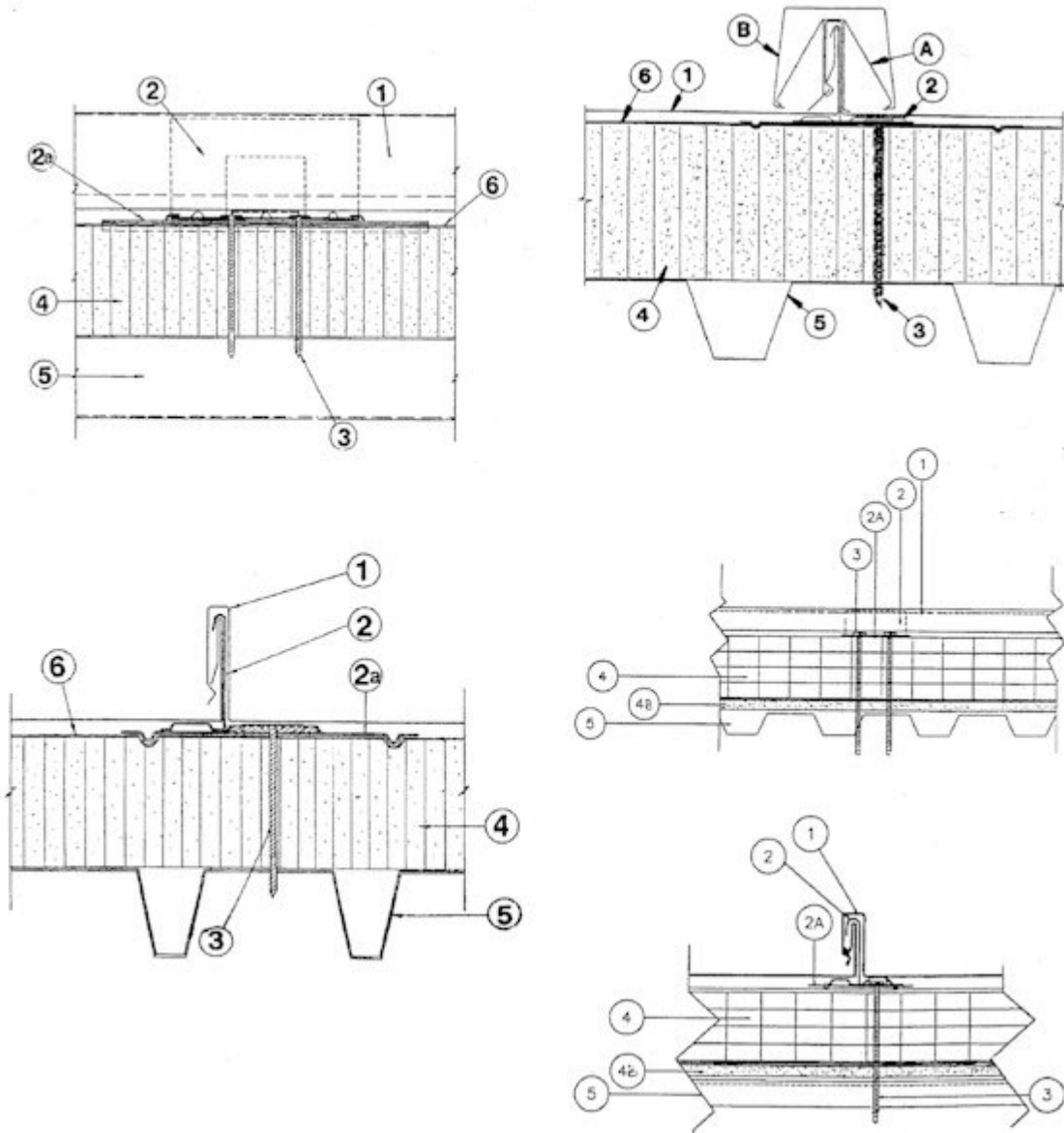


Construction No. 448

Uplift - Class 90

Fire Not Investigated



1. Metal Roof Deck Panels* No. 24 MSG min coated steel. Max panel width 18 in., rib height 1-3/4 in. Panels continuous over three or more spans. Endlaps for panels to be overlapped 6 in.

and to include back up plate (Item 2B). A bead of sealant may be used at panel ends and side joints.

- A&S BUILDING SYSTEMS, INC.-"LokSeam"
- MBCI-"LokSeam"
- MESCO METAL BUILDINGS-"LokSeam"
- NCI BUILDING SYSTEMS LP-"LokSeam"

2. Roof Deck Fasteners* - (Panel Clips) One piece assembly, 3-1/2 in. wide by 1-7/8 in. high. Clip spacing to be 48 in. OC.

- NCI BUILDING SYSTEMS LP-"LokSeam UL 90 Clip"

2A. Bearing Plate - (Optional) To be used in lieu of plywood or OSB (Item 4A) with rigid insulation (Item 4). Bearing plates to be 16 MSG min coated steel. Located under each clip (Item 2) for support.

2B. Endlap Back-Up Plate - (Not shown) No. 16 MSG min coated steel, width of back up plate to correspond to width of panel. Two 1 in. wide by 3/4 in. long tabs are used for sliding over end of panels.

3. Panel Fasteners - (Screws) Screws used to attach the panel clips and bearing plates (Items 2 and 2A) through rigid insulation and into metal deck (Item 5). Screws to be No. 14 Truss head with No. 3 Phillips drive. Length to be a min of 1/2 in. longer than thickness of rigid insulation and metal deck. Two screws per clip. Fasteners used at endlaps to be one of the following: 14x1 in. Type AB self-tapper; 14x1-1/4 in. Hex washer head self-driller; 14x1 in. Type AB Phillips stainless steel self-tapper.

4. Rigid Insulation - (Optional) Foamed plastic, max thickness 4 in. Density to be a min of 2 PCF.

4A. Plywood or OSB - (Optional) (Not Shown) Min APA rated plywood, exposure sheathing span C-D 40/20, nom 1/2 in. thick, or Oriented Strand Board (OSB), nom 7/16 in. thick. 4x8 ft. Sheets to be installed on top of rigid insulation (Item 4) in lieu of bearing plates (Item 2A).

4B. Wallboard, Gypsum - (Optional) Any 5/8 in. thick gypsum wallboard supplied in sheets 2x4 ft to 4x12 ft. Applied perpendicular to steel roof deck direction with adhesive. End joints to occur over crests of steel roof deck and be staggered 2 ft in adjacent rows. The total cumulative thickness of the rigid board (Item 4) and the gypsum may not exceed 4 in.

5. Metal Deck No. 22 MSG min thickness coated steel. Min yield strength 33 KSI. Min depth 1-1/2 in. Max pitch 6 in.

6. Vapor Barrier - (Optional) Installed on top of metal deck (Item 5) or on top of gypsum wallboard (Item 4B) if used. Min 6 mil plastic sheet.

6A. Waterproof Membrane - (Optional) (Not shown) Used to protect plywood or OSB (Item 4A). Installed under panels (Item 1).

7. Supports - (Not shown) Used to support metal deck, spaced per deck manufacturer's specifications.

Refer to General Information, Roof Deck Construction, (Roofing Materials and Systems Directory)
for Items Not Evaluated.

*Bearing the UL Classification Marking