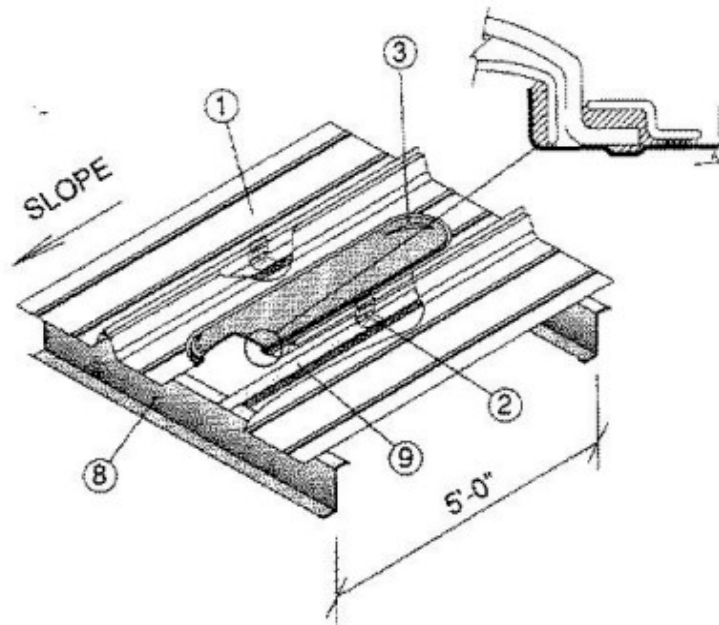


Construction No. 450

**Uplift - Class 90
Fire Not Investigated**



1. Metal Roof Deck Panels* No. 24 MSG minimum coated steel. Maximum panel width 24 in. Panels continuous over two or more spans. Endlaps to occur adjacent to purlin with panels overlapped 3 inches. A bead of sealant may be used at panel endlaps and sidelaps. Adjacent panels to be seamed together along side joints using an electric seaming tool. Seaming operation to include panel clip tabs (Item 2).

- A&S BUILDING SYSTEMS, INC.-"Double-Lok"
- METAL BUILDING PRODUCTS INC--"Double-Lok "
- MESCO METAL BUILDINGS - "Double-Lok"
- NCI BUILDING SYSTEMS LP-" Double-Lok"

2. Roof Deck Fasteners* - (Panel Clips) Four piece articulating clip used with an upper tab clip formed to engage the metal roof deck panel rib (Item 1). Height of the clip to 3-3/8 in. when no thermal spacer (Item 5) is used, and 4-3/8 in. when a thermal spacer is used. Clips are spaced 5 ft OC maximum along length of panels except 2 ft, 6 in. OC each side of building unit (Item 3); located at the panel sides with guide holes in bottom to accommodate two screw fasteners (Item 4).

- NCI BUILDING SYSTEMS LP --"Double-Lok Articulating Clip"

3. Building Units* Translucent, plastic insulated dome installed in Classified metal roof deck panel (Item 1).

- NCI BUILDING SYSTEMS LP --"DL Insulated Dome LTP"

4. Fasteners - (Screws) Screws used to attach the panel clips to purlin to be two (2) 1/4-14 by 1 in. long, self-drilling, 3/8 in., hex-head, plated steel screws with a separate 5/8 in. OD neoprene washer. Screws used at endlap are to be 1/4-14 by 1 in. long with 3/8 in. hex-washer head and separate neoprene washer. Five (5) fasteners are to be used in the flat section of the panel endlap with the first fastener located 3 in. from either rib, and then spaced in a 3-6-6-3 in. pattern. An additional fastener is to be located at the second slant segment on both sides of one rib. Fasteners used with alternate 16 MSG minimum, thick coated steel upper section to be No. 14 by 1 in. long self-tapping fastener. First fastener located 3/8 in. from first slanted segment in a 4;5-1/2;5-1/2;4 in. pattern.

5. Thermal Spacer (Optional) (Not Shown) Polystyrene, 1 in. maximum thickness, 3 in. wide, cut to fit between panel clips.

6. Insulation (Optional) (Not Shown) Any compressible blanket insulation, 6 in. maximum thickness before compression.

7. Endlap Plate Assembly (Not Shown) Used at panel endlaps; consisting of a lower section, 5-5/8 in. wide, with a 1 in. leg and formed to the general profile of the panel, and having four 1 in. wide by 3/4 in., long tabs for sliding over the end of the panel. Upper section to be 2 in. wide and also formed to the general profile of the panel. Upper section to have ribs formed with reinforcement. Both parts minimum 18 MSG coated steel. Alternate 16 MSG minimum thick coated steel upper section 1-1/2 in. wide formed to the general profile of the panel. Six 5/16 in. diameter guide holes located in the flat area only.

8. Purlin Minimum 16 MSG coated steel (55,000 psi minimum yield strength).

9. Angle 2x2 minimum 14 MSG coated steel (55,000 psi minimum yield strength) for use with building units (Item 3). Place on each side of Building Unit (item 3) for mid clip attachment.

Refer to General Information, Roof Deck Construction, (Roofing Materials and Systems Directory) for Items Not Evaluated.

*Bearing the UL Classification Marking