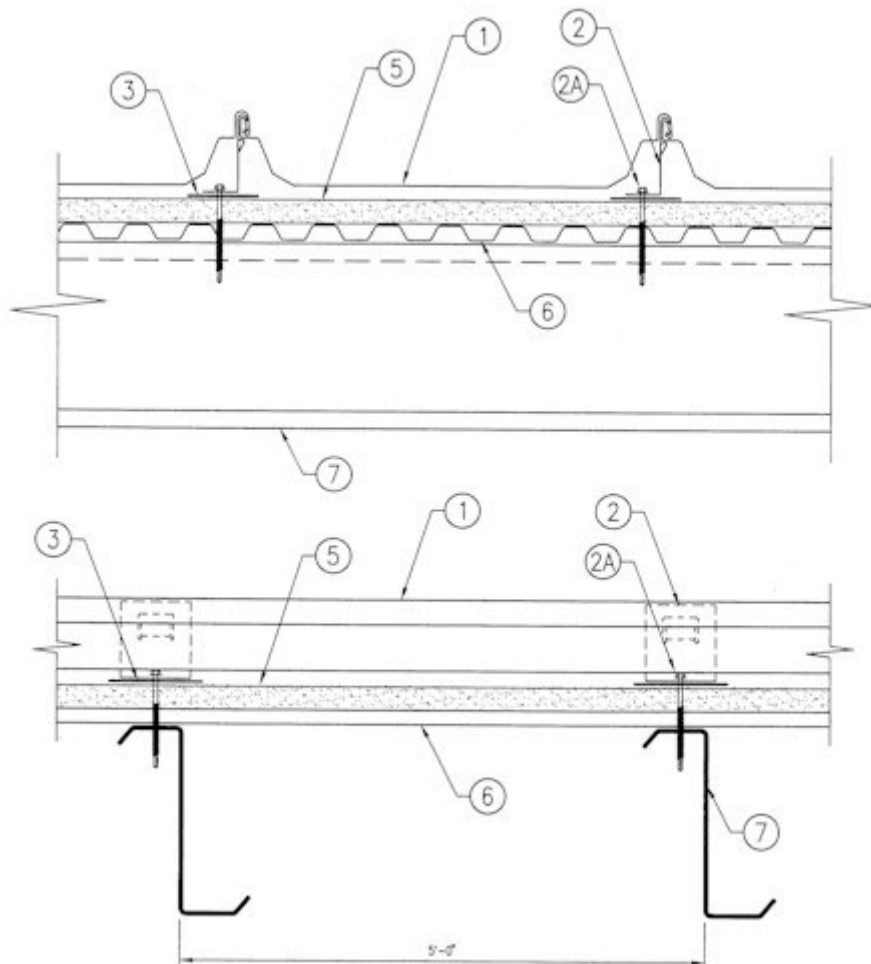


Construction No. 180C

**Uplift - Class 90
 Fire Not Investigated**



1. Metal Roof Deck Panels* No. 24 MSG min coated steel. Panels continuous over two or more spans. Endlaps to occur adjacent to purlin with panels overlapped 3 in. Side laps to be tightened and crimped with a special motorized crimping machine. A bead of sealant may be used at panel end and side laps.

- A&S BUILDING SYSTEMS,INC.-"Double-Lok"
- CHIEF INDUSTRIES INC--"MSC" .
- GALVAK S A D E C V--"Galvalok II" .

- MBCI--"Double-Lok"
- MESCO METAL BUILDINGS - "Double-Lok"
- NCI BUILDING SYSTEMS LP-"Double-Lok"

2. Roof Deck Fasteners* Four piece articulating clip used with an upper tab clip to engage the metal roof deck panel rib (Item 1). Height to be 3-3/8 in. when no thermal spacer (Item 4) is used and 4-3/8 in. when a thermal spacer is used. Clips are spaced 5 ft OC max along length of panels, located at the panel ribs with three guide holes in the bottom to accommodate screw fasteners (Item 2A).

- NCI BUILDING SYSTEMS LP --"Double-Lok Articulating Clip"

2A. Fasteners (Screws) Screws used to attach panel clips (Item 2) to purlins (Item 7) to be 1/4 in. diameter with maximum 28 threads per inch. Length to be 3/4 in. longer than thickness of rigid insulation (Item 5) and liner panel (Item 6). Two screws per clip. Screws used at endlap are to be No. 14, Type A by 1 in. long, Hex Washer Head, self-tapping. First screw is located 3/8 in. from first slanted segment in a 4 - 5-1/2 - 5-1/2 - 4 in. pattern.

3. Bearing Plate (Optional) No. 16 MSG min coated steel, 3-7/8 in. wide by 5 in. long. Used under panel clip (Item 2) when foamed plastic (Item 5) is used.

4. Thermal Spacer (Optional) (Not Shown) - Polystyrene, 1 in. max thickness, 3 in. wide, cut to fit between panel clips.

5. Foamed Plastic (Rigid Insulation) (Optional) - Foamed plastic, min thickness 1 in., max thickness 4.4 in. Density to be 2 pcf or see products Classified under TJBX.

6. Liner Panel (Optional) - No. 29 MSG min coated steel. Ribs to be 9/16 in. deep with a 3/4 in. wide crest and spaced 2.67 in. OC.

7. Purlins 16 MSG min coated steel, (55,000 min yield strength).

Refer to General Information, Roof Deck Construction, (Roofing Materials and Systems Directory) for Items Not Evaluated.

*Bearing the UL Classification Marking