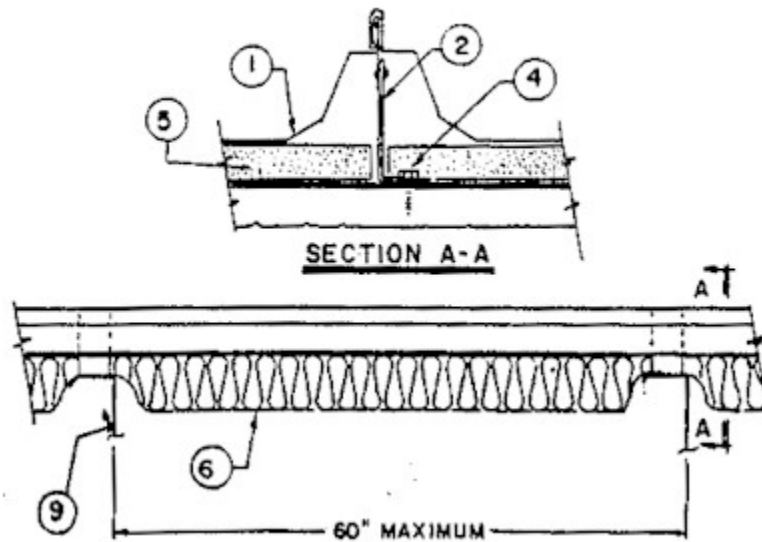


**Construction No. 534**

**Uplift - Class 90**

**Fire Not Investigated**



**1. Metal Roof Deck Panels\*** - For class 90 - No. 24 MSG coated steel, for class 30 - No. 26 MSG min. Coated steel. Panels continuous over two or more spans. End laps to occur adjacent to purlins with panels overlapped 3 inch max. A line of sealant may be used at panel end and side laps.

- A&S BUILDING SYSTEMS, INC.-"Ultra-Dek"
- GARCO BUILDING SYSTEMS - "Garco Standing Seam-GGS"
- MBCI-"Ultra-Dek"
- MESCO METAL BUILDINGS --"Ultra-Dek"
- NCI BUILDING SYSTEMS LP--"Ultra-Dek"
- UNITED STRUCTURES OF AMERICA INC--"Guardian I".

**2. Roof Deck Fasteners\* - (Panel Clips)** - Two piece floating clip with a No. 14 MSG base and a .030 Stainless Steel or .035 Coated Steel top.

- NCI BUILDING SYSTEMS LP - "High or Low Floating Clip"

**3. Building Units\*** - (optional) - (not shown) - Translucent reinforced plastic panels. Nominal thickness 1/16 inch, formed to the same configuration as the metal roof deck panels, with metal reinforcement cut from a classified metal roof deck panel (Item No. 1). Metal reinforcement

attached to translucent reinforced plastic side segments with aluminum pop rivets. Panels continuous over two or more spans.

- NCI BUILDING SYSTEMS LP - "Ultra-Dek Light Transmitting Panel"

**4. Fasteners (Screws)** - Fasteners for panel clip to purlin to be 1/4-14 by 1 1/4 inch long self-drilling, self-tapping, 3/8 inch hex-head, plated steel screw with separate 5/8 inch O.D. neoprene washer. Two (2) screws used per clip. At the endlap, fasteners are to be 1/4-14 by 1-1/4 in. long, self-drilling, self-tapping, plated steel screws with a 5/8 inch OD washer. Six (6) fasteners are to be used in the flat section of the end lap panel with the first fastener located 3 1/4 inches from either rib and then spaced in a 3 1/2, 3 1/2, 3 1/2, 3 1/2, 3 1/2 inch pattern. An additional fastener is to be located at the second slanted segment of the rib on both sides of the endlap panel.

**5. Thermal Spacer** - (optional) - Polystyrene, 1 inch max thickness, 3 inches wide, cut to fit between panel clips.

**6. Insulation** (optional) - Any compressible blanket insulation, 6 inches max. thickness when located between panel (Item No. 1) and purlin (Item No. 9) before compression.

**7. End-Lap Plate Assembly** - (not shown) - Used at panel end laps; Consisting of a lower section, 5 5/8 inches wide, with a 1 inch vertical leg, formed to the general profile of the panel and having four 1 inch wide by 3/4 inch long tabs for sliding over the panel end. Upper section (optional) to be 1 1/2 inches wide 24 inches long and also formed to the general profile of the panel with one end formed to fit over the side rib. Five 5/16 inch diameter guide holes located in the flat with 3 holes located at rib location. Both parts to have ribs formed for reinforcement. Both parts fabricated from No. 16 MSG thick coated steel.

**8. Light Transmitting Panel Backing Plate** - (optional) - (not shown) - When skylight panel is used, backing plate is required. Minimum 18 MSG galv. Steel, 6 inches wide two vertical legs on both sides and formed to the configuration of the metal roof deck panel (Item No. 1). Located over the middle purlin and offers support to the continuous segment building unit (Item No. 3).

**9. Purlin** - No. 16 MSG min. gauge steel (55,000 psi min. yield strength)

\*Bearing the UL Classification Marking.