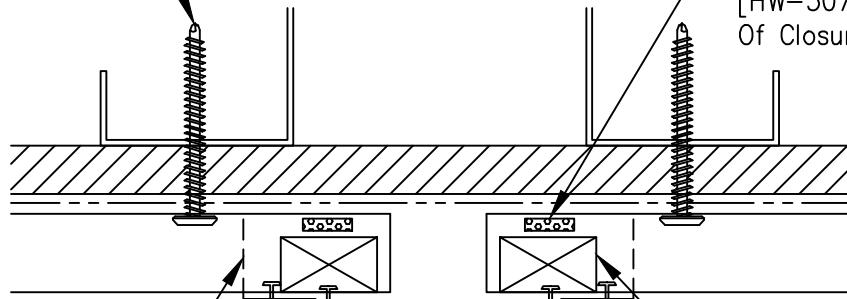


14-10 x _ Deck Screw
At Each Panel Joint

Tape Sealant $\frac{1}{2}$ " x $\frac{3}{32}$ "
[HW-507] Back Side
Of Closure



Optional Outside Metal
Closure [HW-4067LH/RH]
Attach With Fastener #14
 $\frac{1}{8}$ " ϕ x $\frac{3}{16}$ " Pop Rivet SS
(4) Per Panel

Foam Outside Closure
[HW-433]

Fastener #14
 $\frac{1}{8}$ " ϕ x $\frac{3}{16}$ " Pop Rivet SS
At 2'-0" O.C.

Non-Skinning Butyl
Sealant [HW-549]

Flat Splice Trim
[T-5521]

Metal Stud Wall
Framing

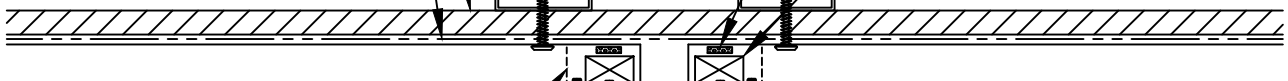
Tape Sealant $\frac{1}{2}$ " x $\frac{3}{32}$ "
[HW-507] Back Side
Of Closure

Wall Sheathing
(Not By MBCI)

14-10 x _ Deck Screw
At Each Panel Joint

Air & Water Barrier
(Not By MBCI)

Foam Outside Closure
[HW-433]



MasterLine 16 Horizontal
Wall Panel

Flat Splice Trim
[T-5521]

Optional Outside Metal
Closure [HW-4067LH/RH]
Attach With Fastener #14
 $\frac{1}{8}$ " ϕ x $\frac{3}{16}$ " Pop Rivet SS
(4) Per Panel

Fastener #14
 $\frac{1}{8}$ " ϕ x $\frac{3}{16}$ " Pop Rivet SS
At 2'-0" O.C.

Non-Skinning Butyl
Sealant [HW-549]

1"
Max.