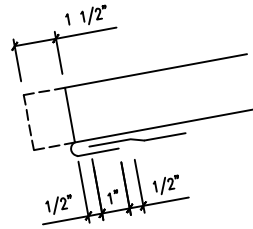
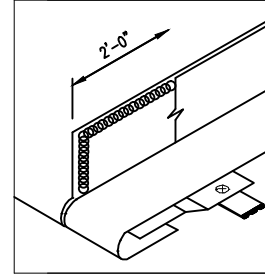


CRAFTSMAN HB BATTEN CAP [FL-566]
 FILL END W/ URETHANE SEALANT



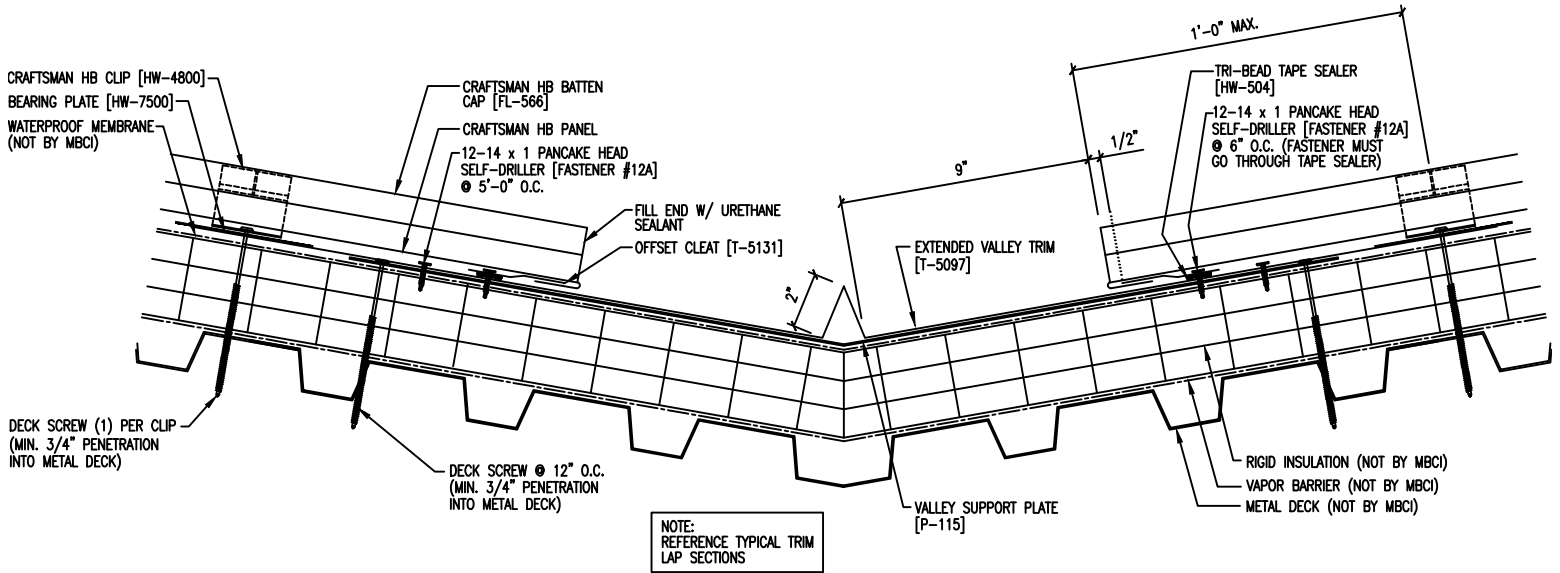
FIELD NOTCH PANEL LEGS AND BEND PAN TO FORM OPEN HEM



FIELD APPLY BEAD OF URETHANE SEALANT TO VERTICAL LEG OF PANEL BEFORE INSTALLING ADJACENT PANEL

PANEL ENGAGEMENT DETAIL

VALLEY SEALANT DETAIL



CRAFTSMAN HB CLIP [HW-4800]
 BEARING PLATE [HW-7500]
 WATERPROOF MEMBRANE (NOT BY MBCI)

DECK SCREW (1) PER CLIP (MIN. 3/4" PENETRATION INTO METAL DECK)

CRAFTSMAN HB BATTEN CAP [FL-566]
 CRAFTSMAN HB PANEL
 12-14 x 1 PANCAKE HEAD SELF-DRILLER [FASTENER #12A] @ 5'-0" O.C.

DECK SCREW @ 12" O.C. (MIN. 3/4" PENETRATION INTO METAL DECK)

NOTE: REFERENCE TYPICAL TRIM LAP SECTIONS

FILL END W/ URETHANE SEALANT
 OFFSET CLEAT [T-5131]

EXTENDED VALLEY TRIM [T-5097]

VALLEY SUPPORT PLATE [P-115]

TRI-BEAD TAPE SEALER [HW-504]
 12-14 x 1 PANCAKE HEAD SELF-DRILLER [FASTENER #12A] @ 6" O.C. (FASTENER MUST GO THROUGH TAPE SEALER)

RIGID INSULATION (NOT BY MBCI)
 VAPOR BARRIER (NOT BY MBCI)
 METAL DECK (NOT BY MBCI)