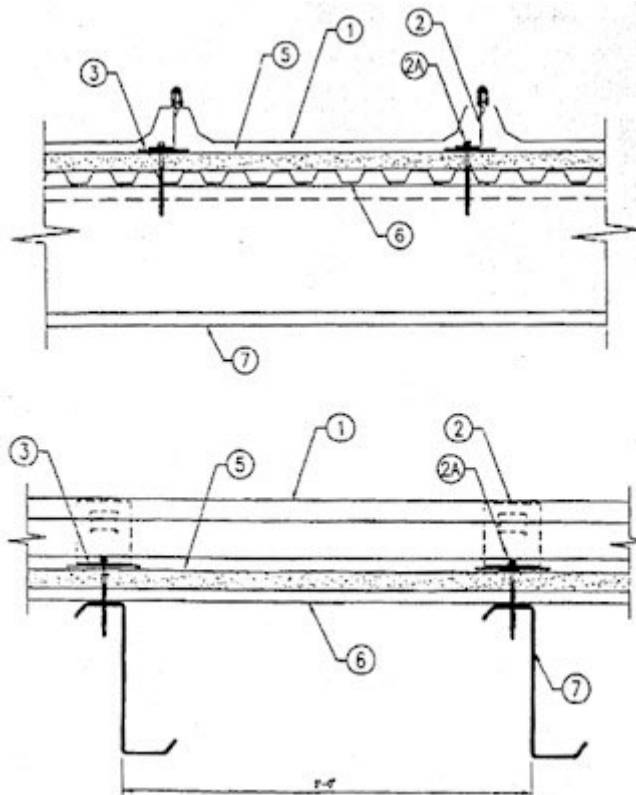


Construction No. 180B

December 12, 2000

Uplift — Class 90

Fire Not Investigated



1. Metal Roof Deck Panels* No. 24 MSG min coated steel. Panels continuous over two or more spans. Endlaps to occur adjacent to purlin with panels overlapped 3 in. A bead of sealant may be used at panel end joints. ("Guardian II" only — Adjacent panels may be seamed with electric seamer with seaming operation to include roof deck fasteners (Item 2). Male/female side laps shall remain interlocked and fully engaged after seaming).

- A & S BUILDING SYSTEMS L.P. — "Ultra-Dek"
- CHIEF INDUSTRIES INC — "STC"
- CORLE BUILDING SYSTEMS — "Corle Snap Seal"
- GALVAK S A D E C V D S C GALVAMET — "Galvalok I"
- GARCO BUILDING SYSTEMS — "Garco Standing Seam-GSS"

- GALVAMET INC — "Galvalok I"
- MBCI — "Ultra-Dek "
- MESCO METAL BUILDINGS — "Ultra-Dek"
- NCI BUILDING SYSTEMS L P — "Ultra-Dek"
- UNITED STRUCTURES OF AMERICA INC — "Guardian I"
- B C STEEL BUILDINGS INC — " BCL-SD "

2. Roof Deck Fasteners* To be any of the following: Fixed or sliding type fabricated from 0.032 in. thick steel. Four piece articulating clip used with an upper tab clip to engage the metal roof deck panel rib (Item 1). Height to be 3-3/8 in. when no thermal spacer (Item 4) is used and 4-3/8 in. when a thermal spacer is used. Clips are spaced 5 ft OC max along length of panels, located at the panel ribs with three guide holes in the bottom to accommodate screw fasteners (Item 2A).

- NCI BUILDING SYSTEMS L.P. — "Ultra-Dek Fixed Clip" or "Ultra-Dek Sliding Clip"
- UNITED STRUCTURES OF AMERICA INC — "Guardian I"

2A. Fasteners (Screws) Screws used to attach panel clips to purlins (Item 7) to be No. 14 Hex Washer Head self-drilling or self-tapping. Length to be 3/4 in. longer than thickness of rigid insulation (Item 5) and liner panel (Item 6). Two screws per clip. Screws used at endlap are to be 1 in. long and same type as above. When the 18 gauge cinch strap is used, five screws are to be used in the flat section of the endlap panel with the first screw located 3 in. from either rib, and then spaced in a 3-6-6-3 in. pattern. An additional screw is to be located at the second slanted segment of the rib on both sides of the endlap panel and one additional screw located at the first slanted segment on both sides of one rib. When the 16 gauge cinch strap is used, screws to be No. 14 by 1 in. long self-tapping. First screw is located 3/8 in. from first slanted segment in a 4 - 5-1/2 - 5-1/2 - 4 in. pattern. One additional screw is located 1/2 in. from first slanted segment on opposite side of same rib where first screw is located.

3. Bearing Plate No. 16 MSG min coated steel, 3-7/8 in. wide by 5 in. long. Used under panel clip (Item 2).

4. Thermal Spacer (Optional) (Not Shown) — Polystyrene, 1 in. max thickness, 3 in. wide, cut to fit between panel clips.

5. Foamed Plastic (Rigid Insulation) (Optional) — Foamed plastic, min thickness 1 in., max thickness 4.4 in. Density to be 2 pcf or see products Classified under TJBX.

6. Liner Panel (Optional) — No. 29 MSG min coated steel. Ribs to be 9/16 in. deep with a 3/4 in. wide crest and spaced 2.67 in. OC.

7. Purlins 14 MSG min coated steel, (55,000 min yield strength).

Refer to General Information, Roof Deck Construction, (Roofing Materials and Systems Directory) for Items Not Evaluated.

*Bearing the UL Classification Mark