



## UNDERHUNG CANOPIES

# QWIKLOK™

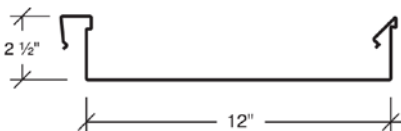
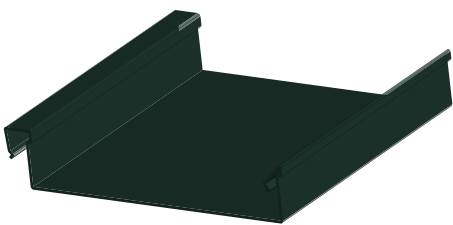
QwikLok™ is ideal for underhung applications. No more fighting with trying to install two panels at one time. Unlike conventional roofing cover, QwikLok™ can be assembled from the underside of the structure one panel at a time, producing a flush appearance with no exposed fasteners.

### Features and Benefits:

- QwikLok™ provides the basic design element for any type of canopy cover. Easy-to-trim flush surfaces make transitions to conventional material simple without major concern for creating special conditions. Direct the flow of water to any desired drainage point by combining QwikLok™ with the MBCI fascia/gutter. Canopies, walkway covers and soffits are all in the QwikLok™ design arena. High gloss finish, immense water carrying capacity and long span characteristics make QwikLok™ today's most popular choice for any underside application.
- The QwikLok™ panel is attached to the structure with the MBCI one-step fastened method. One-step fastened requires only one side of the panel to be attached to the structure. The adjoining panel is snap-locked to the first panel, concealing the fastener from view and providing a secure, flush appearance. This proven fastened method creates a positive interlock between panels. Install QwikLok™ over a variety of substructures such as light gauge framing, purlins, structural steel and joists.

### Product Specifications

- **Applications:** Roof
- **Coverage Widths:** 12"
- **Panel Attachment:** Concealed Fastening System
- **Gauges:** 24
- **Finishes:** Smooth (standard); Embossed (optional)
- **Coatings:** High Gloss White



Descriptions and specifications contained herein were in effect at the time this publication was approved for printing. In a continuing effort to refine and improve products, MBCI reserves the right to discontinue products at any time or change specifications and/or designs without incurring obligation. To ensure you have the latest information available, please inquire or visit our website at [www.mbc.com](http://www.mbc.com). Application details are for illustration purposes only and may not be appropriate for all environmental conditions, building designs or panel profiles. Projects should be designed to conform to applicable building codes, regulations and accepted industry practices. If there is a conflict between this manual and project erection drawings, the erection drawings will take precedence. MBCI's insulated metal panel product line is manufactured by Metl-Span®. © 2020 MBCI®, part of the Cornerstone Building Brands family. All rights reserved. 0706209991133/RevA/MS/0720