



CONCEALED FASTENING SYSTEMS

SHADOWRIB™

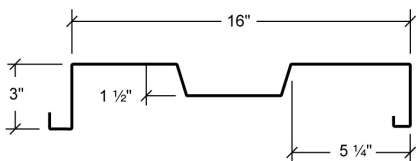
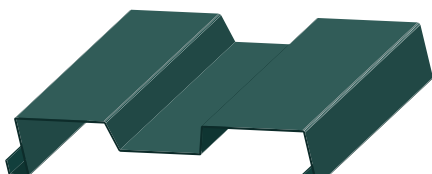
ShadowRib™ is a 3" deep panel that combines aesthetics, economy and function to bring definition to metal structures. ShadowRib™ is a proven performer and a versatile tool to the designer. Structural strength in the ShadowRib™ panel is accomplished without sacrificing appearance or design flexibility. The fluted face creates distinctive shadow lines.

Features and Benefits:

- Panels may be secured to the structure from the outside of the building with the ShadowRib™ concealed clip or from inside the building with an expansion fastener. Both are positive fastened methods that create a secure interlock between panel and structure.
- The ShadowRib™ panel can be used for walls, fascias and equipment screens. Apply the panel over light-gauge framing, purlins, girts, structural steel and joists.
- ShadowRib™ carries Florida approval

Product Specifications

- **Applications:** Wall
- **Coverage Widths:** 16"
- **Panel Attachment:** Concealed Fastening System Outside Panel Attachment – ShadowRib™ Panel Clip
- **Gauges:** 24 (standard); 22 (optional)
- **Finishes:** Smooth (standard); Embossed (optional)
- **Coatings:** Galvalume Plus®, Signature® 200, Signature® 300, Signature® 300 Metallic





SHADOWRIB™

CONCEALED FASTENING SYSTEMS

CATEGORY	CHARACTERISTIC	TEST METHOD	PURPOSE	RESULT
STRUCTURAL	Negative Wind Loads	ASTM E 1592	Provides a standard procedure to evaluate or confirm structural performance under uniform static air pressure difference	See Load Chart Section
	Positive Wind Load	AISI S100	North American Specification for the Design of Cold-Formed Steel Structural Members	See Section Properties and Allowable Load Table Section
WALL LISTINGS	Wall Performance - Texas Department of Insurance	ASTM E 1592	TWIA provides windstorm and hail insurance in areas exposed to hurricanes and currently provides windstorm and hail coverage in the following 14 "first tier" Texas coastal counties: Aransas, Brazoria, Calhoun, Cameron, Chambers, Galveston, Jefferson, Kenedy, Kleberg, Matagorda, Nueces, Refugio, San Patricio and Willacy.	See EC-99

Descriptions and specifications contained herein were in effect at the time this publication was approved for printing. In a continuing effort to refine and improve products, MBCI reserves the right to discontinue products at any time or change specifications and/or designs without incurring obligation. To ensure you have the latest information available, please inquire or visit our website at www.mbc.com. Application details are for illustration purposes only and may not be appropriate for all environmental conditions, building designs or panel profiles. Projects should be designed to conform to applicable building codes, regulations and accepted industry practices. If there is a conflict between this manual and project erection drawings, the erection drawings will take precedence.

© 2023 MBCI®, part of Cornerstone Building Brands, Inc. ALL RIGHTS RESERVED. 0706209991137/RevB/MS/0123

